

# masterCAMPER

a custom-fit solution



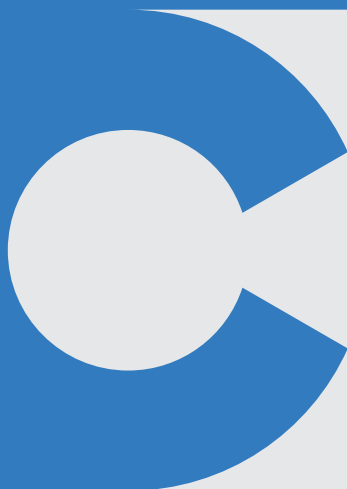
Polish manufacturer of tow hitches for campervans

# Product Catalogue

2022

## Manufacturer

25 years of market  
presence



masterCAMPER



## We manufacture tailor-made\* tow hitches for campervans

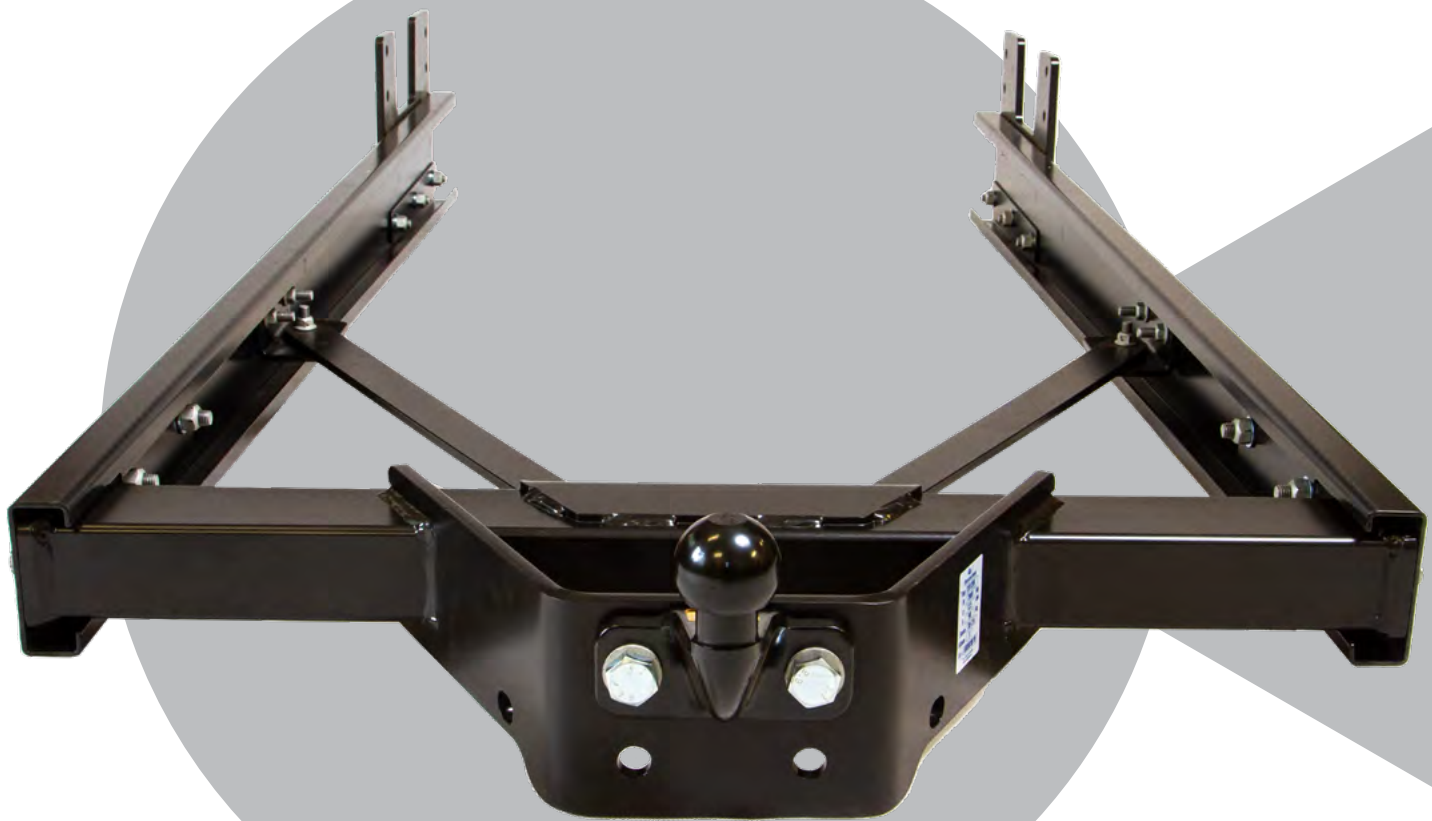
\*The solution in the portfolio requires no additional customisation or fabrication of the tow hitch to a specific campervan model (by, e.g. cutting, drilling, etc.), which means:

- reduced installation time;
- fewer tools are required;
- the installers need no additional qualifications;
- the installation process is safer.

Mastercamper is a **POLISH manufacturer** of tow hitches which excel in quick and trouble-free installation while boasting a high quality of materials and production. Customers value Mastercamper products for an excellent price-to-quality ratio.



Each product assembly is fully ECE-approved, including the vehicle chassis frame mount.



**A TAILOR-MADE SOLUTION**

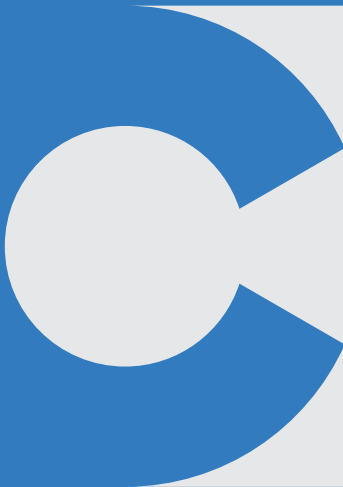
# Ford Transit V363 tow hitch

## Overview

- The product kit includes all installation accessories: the chassis frame main mount, the hitch frame bars, the tow hitch bar and ball, and the fastening bolts;
- Factory-made tow hitch installation openings require no modification;
- Powder-coated finish,
- Most fasteners are flanged bolts and self-locking nuts;
- Optional accessories: dedicated electrical tow harness

## Specifications

Part no.	281200
Vehicle MY	03 / 2014-
Maximum towed weight [kg]	2000 kg
Tow D value [kN]	12,5
Vertical load [kg]	90
Assembly weight [kg]	60
Assembly dimensions	maximum vehicle length extension 1460mm, tow hitch bar width 820mm
Approval No.	E32*55R02/00*0091*00
Bumper cover cut-out:	depends on the specific body build





**A TAILOR-MADE SOLUTION**



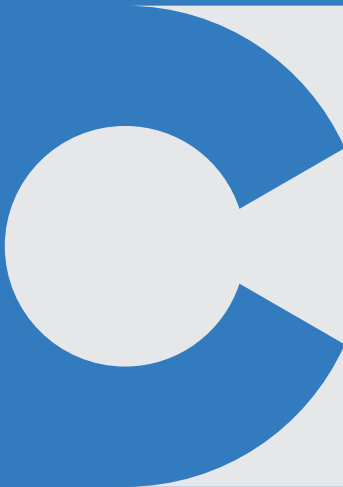
# Fiata Ducato VAN tow hitch

## Overview

- The product kit includes the installation accessories: the tow hitch bar, the hitch frame bars, the tow hitch ball, and the fastening bolts;
- Additional bumper beam brace;
- Powder-coated finish;
- The design fits extended wheelbase models: L4/XL
- Optional accessories: dedicated electrical tow harness

## Specifications

Part no.	3002033
Vehicle MY	06-2006...
Maximum towed weight [kg]	3000 kg
Tow D value [kN]	16,9
Vertical load [kg]	150
Assembly weight [kg]	25
Bumper cover cut-out:	tak





**A TAILOR-MADE SOLUTION**

# Fiat Ducato, Peugeot Boxer & Citroen Jumper Van tow hitch

## Overview

- The product kit includes the installation accessories: the tow hitch bar, the hitch frame bars, the tow hitch ball, and the fastening bolts;
- Additional bumper beam brace
- Powder-coated finish;
- Most fasteners are flanged bolts and self-locking nuts
- Available as the standard version or for a chassis with the SAWIKO mount adapter
- Optional accessories: dedicated electrical tow harness.

## Specifications

### Fiat Ducato standard tow hitch

Part no.	391400
Vehicle MY	od 06/2006-
Maximum towed weight [kg]	2000 kg
Tow D value [kN]	12,5
Vertical load [kg]	120
Assembly weight [kg]	60
Assembly dimensions	Assembly dimensions: maximum vehicle length extension 15,700mm, tow hitch bar width 1,045mm
Approval No.	E32*55R02/00*0113*00
Bumper cover cut-out:	depends on the specific body build

### Fiat Ducato tow hitch for the SAWIKO mount adapter

Part no.	381400
Vehicle MY	od 05/2006-
Maximum towed weight [kg]	2000 kg
Tow D value [kN]	12,5
Vertical load [kg]	120
Assembly weight [kg]	60
Assembly dimensions	Assembly dimensions: maximum vehicle length extension 15,700 mm, tow hitch bar width 1,020 mm
Approval No.	E32*55R02/00*0110*00
Bumper cover cut-out:	depends on the specific body build





Fiat Ducato, Peugeot Boxer & Citroen Jumper Van tow hitch

or the SAWIKO mount adapter (P/N 381400)



w/o the SAWIKO mount adapter (P/N 391400)



**A TAILOR-MADE SOLUTION**

# Accessories

## Dedicated electrical tow harnesses

The product kit includes:

- An electrical wiring harness for the specified vehicle;
- Towed vehicle light control module;
- 13-pin external outlet;
- Fastening bolts;
- Installation guide.



## Park foot brackets

The brackets facilitate quick and easy installation of campervan park feet. This product is sold in kits of 2 pcs.



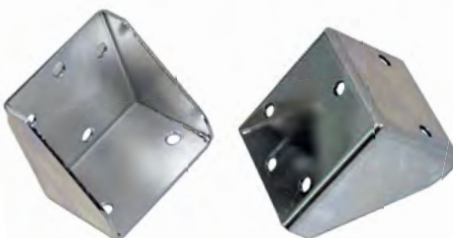
w/o bracket



w/bracket



park foot installed

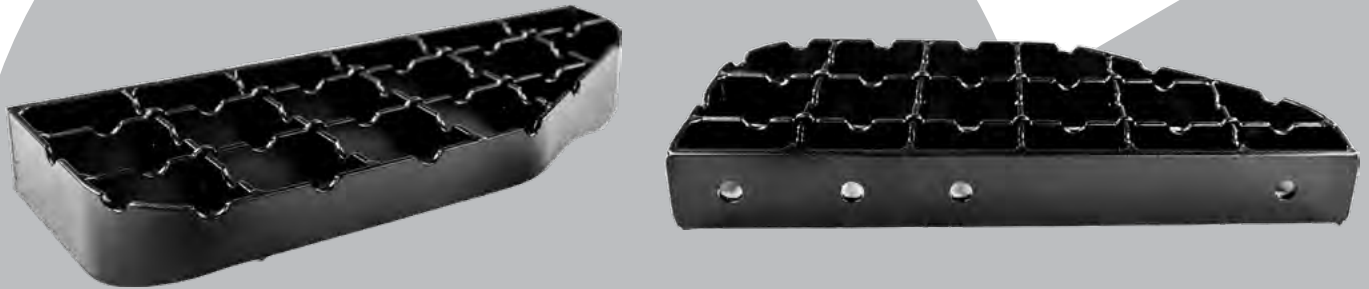


# Universal tow hitch step

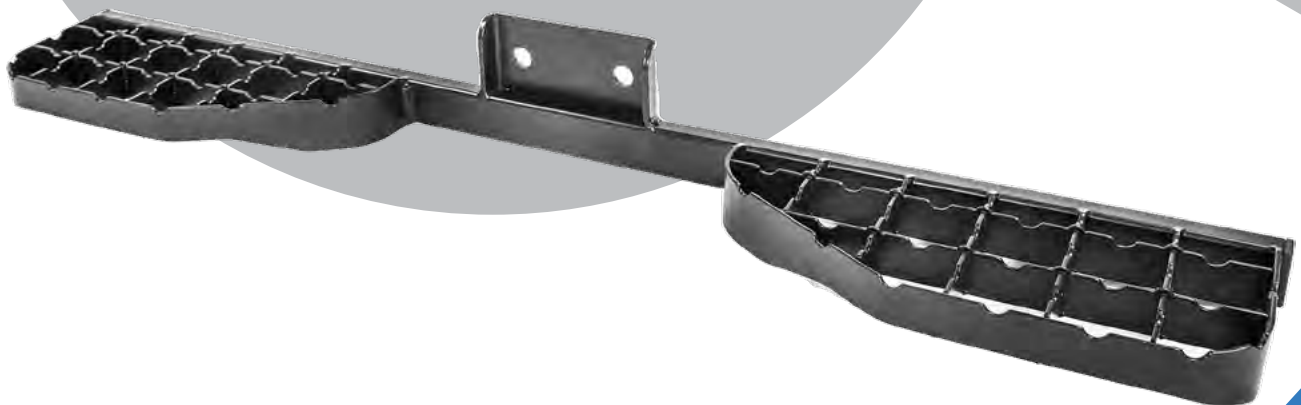
## Overview

- A support for getting in and out of the vehicle or handling loads on and off easier
- A single dedicated step, driver's and passenger's sides available;
- Bolted to the tow hitch bar dedicated to the specific vehicle;
- Tow hitch removal does not require separation of the ball

## Universal single step



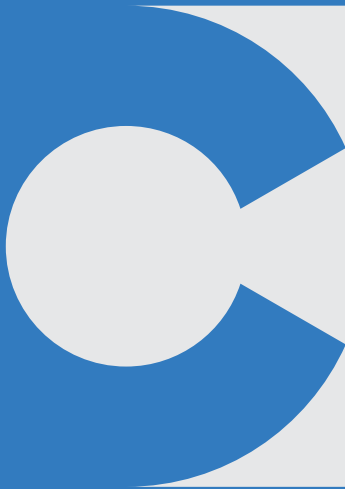
## Universal double step



**A TAILOR-MADE SOLUTION**

# Distribution partnership

We offer partnership opportunities to campervan dealerships and vehicle accessory installers: we can refer campervan owners to your business.



## Want to become a partner?

1. Visit our website, **www.mastercamper.eu**
2. Specify the campervan in 5 steps.
3. Submit a request.
4. We will return to you with a tailor-made solution and our terms and conditions of business
5. We will post your contact details as a partner on our website.

## Support

We will not leave you stranded with the selection or installation of our products. We provide full technical support, reference documentation, and video tutorials.

## Approvals

Our tow hitches feature approvals for the entire assembly



# A TAILOR-MADE SOLUTION

# Contact us

Looking for a reliable partner to do business with? Contact our sales department.



## **E-MAIL US**

[kontakt@mastercamper.eu](mailto:kontakt@mastercamper.eu)



## **CALL US**

[+48 618 138 352](tel:+48618138352)



## **VISIT OUR WEBSITE**

[www.masterCAMPER.eu](http://www.masterCAMPER.eu)



## **ARRANGE A VISIT**

62-022 Rogalin ul. Jesionowa 4 Polska

### Registration details:

Master Hak Michalak & Wspólnik Sp. j.

Rogalin, ul. Jesionowa 4; 62-022 Mosina Polska

NIP 777-22-76-585